

# Annual Report

Create. Connect. Change Lives.

2016



Nina Haggerty Centre for the Arts

the  
**nina**

## In this issue:

Who's who.....	3
Message from board.....	4
Board slate, thank you.....	5
Volunteers.....	6,7
The collective.....	8
The Ninas.....	9
Stantec artist Leona Clawson.....	10,11
RBC artist apprentices.....	12,13
Urban Spirits/Crystal Kids.....	14
TELUS family Arts.....	15
Jubilee Auditoria community arts.....	15
Stollery exhibitions.....	16,17
Exhibit sponsors.....	18
External exhibitions.....	18,19
ATB music project.....	20,21
Financial report.....	22
Sustaining partners.....	23
Accreditation.....	23
Patrons.....	24,25
Community events at Nina.....	26,27
Here's Nina.....	28
Festivals.....	29
Nina's new website.....	30,31
Make our studios your legacy.....	32
Win a trip to Hawaii.....	33
Awards.....	34
Who is Nina Haggerty?.....	34
Nina by the numbers.....	35



## our vision

*All people have the right to achieve their highest potential, which includes the right to creative expression. Creativity lies within everyone and can be powerfully expressed through the arts. The Nina Haggerty Centre for the Arts (the Nina) believes in the importance of creation and exhibition of art by those who face barriers to artistic expression.*

1 Front cover art by Carl Philip

2 Ceramiic art (p2) by Mariola Mielcarz and (p3) John Polianec

3 Back cover: Nina dancers rehearsing for their performance at the patrons' luncheon

# Nina's board, staff and volunteers

## Board officers and directors

Shelagh Kubish, chair  
Janice Kosak, vice-chair  
Svetlana Pavlenko, secretary/treasurer  
Cecilia Bloxom, director  
Jodi Eyolfson, director  
Bruce Kirkland, director  
James Morrissey, director  
Roy Skoreyko, director  
Noel Xavier, director  
Heather Zwicker, director

### *Directors leaving the board:*

Cecilia Bloxom  
Svetlana Pavlenko

## Permanent and contract staff

Wendy Hollo, executive director  
Paul Freeman, artistic director  
Rona Fraser, director of fund development  
Jocelyn Brown, volunteer manager  
David Janzen, exhibition coordinator  
Cynthia Sentara, studio manager

## Professional artistic staff

Brenda Kim Christiansen  
Carolyn Gingrich  
Amanda Howell  
Brittney Roy  
Susan Seright  
Jill Stanton

### *Staff leaving during the year:*

Stephanie Dickie, community engagement  
Alysha Creighton, artistic staff

## Volunteers

Najim Al Tameemi  
Carly Ball  
John Beima  
Megan Brand  
Marion Brandt  
Melisa Brittain  
Elliot Burg  
Jim Cummings  
Carmen Dam  
Alyson Davies  
Cindy Decock  
Yvonne DuBourdieu  
Ceilidh Evans  
Jodi Eyolfson  
Frankie Fernandez-Rachubinski  
Ashley Fouillard  
Allison Franke  
Carolyn Gingrich  
Yong Fei Guan  
Alexandra Gusse  
Joan Jeffery  
Gerry Johnston  
Jaguar Jones  
Mellissa Kraft  
Brenda Law  
Jeanette Lazar  
Jennifer Lewin  
Zoe Luski  
Maud Madsen  
Karen Mathews  
Kelly McClung  
Shane McDonald  
Carol McCrae  
Stephanie Medford  
Sarah Michen-Sego  
Alexis Milinusic

Hillary Mussell  
David Mylet  
Kayla Nelson  
Airi Ono  
Jennifer Parker  
Alicia Proudfoot  
Art Rossier  
Nina Rossier  
Anna Scarpelli  
Cynthia Sentara  
Haadi Shuaib  
Yvette Stack  
Courtney Standing  
Jennifer Stewart  
Alexandra Tang  
Jeff Tees  
Claire Theaker-Brown  
Monika Tichaecek  
Colleen Ulliac  
Caitlin Wilson  
Dennis Yowney  
Erika Zanello



## message from the board chair



We have had a year to be proud of. The executive team and the professional artistic staff at the Nina have done great work reinforcing the purpose of the Nina and the power of art to transform lives.

At the core of our work is our support of adult artists with developmental disabilities, creating a safe place in our studios to freely explore their ideas and emotions through a range of media. This model of support also extends to other individuals who can use art to improve their lives.

The main studios hum with activity throughout the week, and programming at other times makes the community richer. Programs include the RBC Emerging Artists Apprenticeship project, Urban Spirits Rotary Crystal Kids Art Program, Jubilee Auditoria Society Community Arts Night, ATB Music and Recording Program, and the TELUS Community Arts Night.

With the support of the corporate sponsors and the artists who oversee all the activities, the Nina is living our motto:

**Create, connect, change lives.**

A new collaboration with Stantec helped us focus attention on one artist, recognizing them for the commitment they bring to their artistic practice and the quality of their work over time.

In 2015, the spotlight shone on Scott Berry and his show "Confusement." After being on display in the Stollery Gallery at the Nina, "Confusement" travelled to several other venues, bringing this artist and his work to the attention of a broader audience.

This year, we are celebrating Leona Clawson as the 2016 Stantec Artist of the Year and showing off her exhibition "Wooodland" in several public venues, including the Stantec offices in Grande Prairie and at the Rutherford Library on the U of A campus.

Having enough funds to deliver all the programming at the Nina continues to be a challenge. The Board is focused on ensuring that the centre remains in good shape fiscally so we can keep up with the creativity of our artists and deliver the programs that we know make a difference. We appreciate all the support we get from our donors, who are part of our good news story.

While the board looks forward to the year ahead, we must pause to bid a fond farewell to Svetlana Pavlenko who has served for the past several years as our secretary and treasurer, and to Cecilia Bloxom who leaves the board after one term. Both are wonderful ambassadors for the Nina. We thank them for their contributions and wish them the best as they move on to new ventures.



# board slate

THE NINA HAGGERTY CENTRE FOR THE ARTS (THE NINA)  
IS PLEASED TO PRESENT THE FOLLOWING SLATE OF  
OFFICERS FOR RATIFICATION BY MEMBERS:

Shelagh Kubish: chair  
Janice Kosak: vice-chair  
Noel Xavier: treasurer  
Jodi Eyolfson: secretary

DIRECTORS RETURNING TO THE BOARD IN A FIRST OR  
SECOND TERM ARE:

Jodi Eyolfson  
Bruce Kirkland  
James Morrissey  
Roy Skoreyko  
Heather Zwicker



1

## thank you Svetlana and Cecilia

It's always hard to say good-bye, and this year we must bid farewell to two members of the Nina board.

Svetlana Pavlenko joined Nina's board as a director just before we moved into our new facility on 118th avenue. We thank one of our founding board members, Jeni Adler, for bringing Svetlana in for a tour. The rest, as they say, is history.

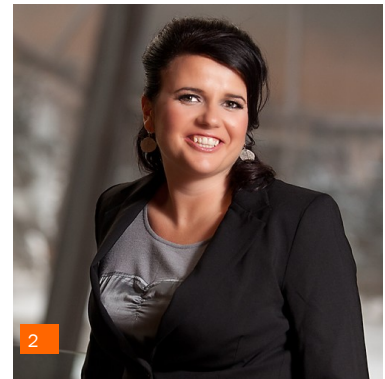
Svetlana has been a dedicated director, braving the thankless task of policy manual review, and has always been quick to respond to requests to represent Nina at events and functions. For the past several years she has served as Secretary, and even extended her second term by a year to serve as our Secretary/Treasurer this past year.

A Rise Award winner (2010) and recipient of a 2015 Top 40 Under 40 award, Svetlana has been generous in sharing her talents and time. Reflecting on her experiences at the Nina, she has found it amazing to see people coming out of their shells. "I am proud and honoured to serve on the board of this amazing organization that helps people with developmental disabilities come out of their hidden place to become artists and creators."

Cecilia Bloxom has served one term on the board, bringing with her a strong background in communication to the table. She worked with board and staff to develop a communication plan and has proven to be a valuable asset during the past year as the board and organization have grappled with some growing pains.

Cecilia leaves the board to take on the role of president of the local chapter of a national public relations society, but promises to be a strong ambassador for the Nina in her travels.

We thank Svetlana and Cecilia for their contribution to the Nina and wish them every success in their future endeavours. We also hope to see them at future events and artist receptions!



2

1 Roy Skoreyko joined the board in 2015

2 Cecilia Bloxom

3 Svetlana Pavlenko



3



## volunteers making a difference

Special event volunteers contributed more than 400 hours last year...

...helping with art sales and receptions, family art day, art nights, the patrons' luncheon, Nina's birthday bash and our music salon with Sass Jordan.

They also staffed the gallery on Thursday evenings and Saturdays, cleaned and painted, spread Christmas joy to our artists and worked our casino.

Nina's participation in Symphony in the City, the Royal Bison craft sale and our CFCW radiothon was also volunteer powered.

We couldn't do it without you!

Volunteers create, connect and change lives every day at the Nina. This year, 58 volunteers contributed a total of 1,959 hours, helping in the studios, the gallery and with special events.

There was a record number of special events this year and volunteers played an integral role. At almost every event, Erika Zanello was there with her organizational genius to take care of whatever presented itself. We thank Jennifer Lewin and Jennifer Parker for their wonderful photos, and the many volunteers, including Colleen Ulliac, Alexandra Tang and Anna Scarpelli for their help with our many gallery receptions.

This year, we were also fortunate to have a casino and we extend heartfelt thanks to our casinos volunteers. Those late nights paid off - proceeds from those two days in January added just under \$80,000 to our bank account!

We were also delighted to welcome volunteer groups from Alberta Education, Stantec, TD, TELUS and CASA who cleaned, painted and generally made our lives better. It is truly amazing what one energized group can do, including creating great merchandising ideas for our on-line store, fairs and Christmas sales.

You can find out more about volunteering at the Nina by visiting our website.



thank you  
to each and  
every one of  
our amazing  
volunteers!



- 1 Dennis Yowney with Esther Tyrie
- 2 Fabric art piece by Vanessa Ryl
- 3 Alberta Education staff
- 4 Stantec employees clean up at Nina during Stantec in the Community Day
- 5 Erika Zanella with Yvette Prefontaine
- 6 TELUS volunteers Melissa Melnyk and Hebo Garan





## the Nina artists' collective

When people first join the Nina artists' collective, their lives are typically defined by disability. Most often, their lives are fairly structured, with others responsible for making all the decisions that impact their lives. In the studios, they are encouraged to work as independently as possible and must make all their own decisions about their art making. The professional artistic staff push artists to experiment with different media, explore new techniques and look within to find and express their own unique voice.

**Great things happen when you give a person freedom of expression!**

We see an explosion of creativity every day in the studios and, while success does not happen overnight, many artists develop their artistic practice to the point that their work is exhibited and sold.

**Selling work and seeing art exhibited in public is life changing.**

Half of the proceeds from art sales go to the artist and the other half goes back into the program to purchase more art supplies. Perhaps even more important than the money (which is huge) is the impact on confidence and self image. *"I am an artist!"* That's a game changer.

This year, we supported as many as 200 adults with disabilities, with 170 artists active in the studios each week.

**1** Lisa Reece at work in the print studio

**2** Artists at work in the main visual art studio (foreground Randy Stennes, at drawing table Scott Berry)



# Edmonton's newest arts awards

## create

Jaymee Howarth is truly creative and often invokes the envy of the professional artistic staff at the Nina who wish that they had her drawing skills. She is so focused on her art making when she is in the studio, it is difficult to get her to even stop for lunch! While Jaymee may struggle to communicate with words, she always connects



*The create award is given to an artist who has demonstrated their commitment to becoming an artist through their enthusiasm for making art when in the Nina studios, and they may be making art on their own time. They are developing a vision for their work or have broken through a creative barrier and innovated their own practice.*

## connect

Ulrike Rossier has been connecting with audiences for more than a decade, creating her trademark colourful abstracts five days a week in the Nina studios. A few years ago, she received the "people's choice" award at the Mayor's Celebration of the Arts and this year, her art was featured on a billboard (part of the YEGCanvas project with Pattison



*The connect award is given to an artist who has been able to connect with a broader community through their artwork or artistic practice. Their work has been exhibited in public spaces or reproduced on merchandise, used for promotional material or been the subject of media attention. As a result, the broader community has been able to learn about them as a person and appreciate their contribution through art.*

## changed lives

Desiree Stewart exemplifies the power of art to change lives. Initially very withdrawn and lacking confidence, she has found a voice in the ceramic studio, challenging herself and creating work that is uniquely her own. Art has become a very important part of Desiree's life and contributes to a renewed sense of identity and potential.



*The changed lives award is given to an artist who has helped us to see how art enriches lives. The artist's experiences have enabled them to change their view on life and add the word "artist" to the story they tell about themselves. The people they know have a new appreciation for their unique abilities and commitment to their art practice.*

## 2015 Stantec artist of the year

Scott Berry had an amazing year as Nina and Stantec joined to celebrate his commitment to his artistic practice and significant body of work. This success was well-deserved as Scott is a committed and hard working artist. He has produced binders of black and white drawings for stop motion animation and has had success working in various media.



*The Stantec artist of the year is selected for their demonstrated commitment over time to their art practice. They have developed a vision for their art making that can be seen through a consistent, identifiable style and their artwork is consistently chosen for exhibition and sale.*



## it started with a quilt...

Leona Clawson is an inspired artist. She sleeps, eats and breathes art and has successfully worked in different media, including painting, drawing, ceramics, fabric and sculpture. She can even add puppeteer to her resume.

*With more than a decade of successful art making in the Nina studios and a definite passion for her artistic practice, Leona was an obvious choice for the Stantec artist of the year award.*



One of Leona's primary projects (she often has several things on the go at one time), was a quilt. She worked diligently in the fabric studio, creating numerous panels that depicted animals and people in outdoor settings. The scenes moved through the seasons and included a whimsical character she named Charlie. These outdoor scenes were inspired in part by last year's trip to an international disability art summit in Glasgow, Scotland. Leona has limited short term memory so already concrete memories of the trip are fleeting but the visual impact of drives through the Scottish countryside remain.

As Stantec artist of the year, Leona had a tough act to follow. Scott Berry, last year's recipient, set the bar pretty high with his inspired *Confusement* installation. Working with the artistic team, Leona expressed the desire to bring her quilt, and Charlie, to life.

Leona and the team did a magnificent job of creating that world. Leona recreated her quilt panels on gigantic cloth panels using a piece of charcoal attached to a long stick to form the backdrop for installation.

Her installation, *Wooodlands*, opened in the Stollery Gallery in February 2016. The reception for the installation also celebrated Nina's 13th birthday.



# Stantec artist of the year

## Leona Clawson

Three years ago, Stantec sponsored an exhibition in the Stollery Gallery at the Nina and a beautiful relationship was born. Stantec wanted to explore ways they could help bring work created by Nina artists to a broader audience. The brilliant result was creation of the *Stantec Artist of the Year*.

Nina's annual birthday bash presents the perfect opportunity to announce the recipient of the Stantec Artist of the Year award which is formally presented at Nina's annual fund-raiser in November. The artist's work, or work inspired by the artist, is exhibited in the Stollery Gallery each February, and then travels to other locations.

Last year's *Confusement* installation inspired by Scott Berry travelled to Stantec's foyer, the Spruce Grove Library, City Centre Mall and to a festival in Calgary. This year, Leona's Woodlands installation has already been in the Stollery Gallery and Stantec foyer. Later this summer, it travels to our downtown exhibition space in City Centre Mall, and then its off to Grande Prairie before coming home to the Rutherford Library at the University of Alberta.

Thanks to Stantec's generous support, work by deserving artists is being seen and appreciated by a much-expanded audience. Additionally, the Stantec connection has opened the door to new public exhibition spaces, introducing us to Oxford Properties. They have graciously extended our use of the City Centre Mall NE window display gallery for the next year. Watch for new work in this high traffic and very visible space every two to three months.

1 Leona Clawson welcoming guests to the Woodlands exhibition.

2 A panel from the quilt that inspired the exhibition.

3 Nina's birthday cake created by Over the Top Cakes

4 Woodlands in the Stollery Gallery

5 6 7 Woodlands at Stantec in downtown Edmonton



# Stantec



1 Lora Pallister, Desiree McCook, Kim Hung Ho and Dale Badger. Jaymee Howarth, Yvette Prefontaine and Ulrike Rossier also had work chosen for the YECCanvas project.

2 2015 RBC apprentices, Courtney Standing, Paul Freeman, Hillary Mussell, Alicia Proudfoot, Carla Gruber and Yong Fei Guan with Artistic Director Paul Freeman

Seven artists from the Nina collective were chosen by blind jury to have their work displayed as LRT posters and billboards.

The work was rotated for maximum exposure. Artists were paid for the use of their images and were thrilled to see their work in public spaces.

The Nina congratulates the City of Edmonton, Edmonton Arts Council and Pattison Outdoor Signs on this impressive project. In total, 45 works by 22 artists were exhibited over the course of six months.





In its' third year, the RBC Emerging Artists Apprenticeship project has now hosted 17 artists about to transition from post secondary education to a professional arts career.

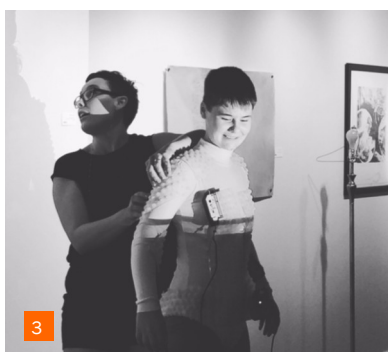


**RBC**  
Emerging Artists  
Project

Between May and August, these apprentices enjoyed the opportunity to work alongside Nina's professional artistic staff and attend workshops on topics that include grantsmanship, social media, exhibition submissions, press releases and exhibit installation.

The program concludes each year with an exhibition of work created, juried and installed by the apprentices.

RBC and the Nina look forward to following the careers of these emerging artists. One graduate, Alysha Creighton (2014) became a lead artist at the Nina and is now teaching in



3 Hillary Mussel assists Alicia Proudfoot with her performance piece during the 2015 exhibition in the Stollery Gallery.

4 RBC Regional Manager, Janet Mosier, came to personally deliver sponsorship cheque.

5 2016 apprentices, Madison Dewar, Maren Elliot, Mitchel Chalifoux, Christelle Agahozo, Maude Madsen and Alexandra Gusse, with Paul Freeman and Wendy Hollo



# Crystal Kids rock!

What do your kids do after school on “early out” days? Youngsters in our neighbourhood who access programs at Crystal Kids get to make cool art with professional artist, Brittney Roy.

This program, made possible by a generous grant from the Urban Spirits Rotary Club of Edmonton, has been going strong for two years now, offering weekly classes throughout the school year.

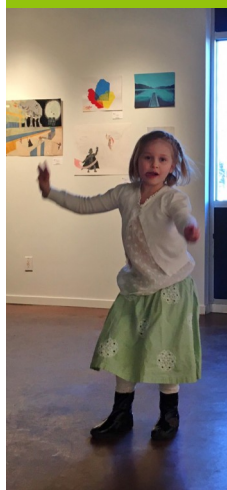
The kids have a lot of fun creating individual and group projects and are proud to show off their successes to family members and friends at the year end exhibition and artists’ reception.

Brittney Roy has watched participants improve their confidence along with their skills in art making. “It’s great to see them express themselves with materials they’ve never used. By the time we got to print making, they were all great at taking risks and supporting each other.”

Youth leaders from Crystal Kids see the youth really putting themselves into their art projects, noting the sense of pride and accomplishment they express. Simply put by one participant, “Art makes me happy. I can show how I feel.”



big thanks to  
Urban Spirits  
Rotary club  
for making this  
after school  
art partnership  
program with  
Crystal Kids  
possible



- 1 Brittney Roy enjoys seeing the kids discover themselves through art
- 2 Year end reception hosted by Urban Spirits Rotary Club
- 3 Kids showing off their artwork at TELUS Family Art Night
- 4 Year end joint reception for TELUS Family Art Night and Jubilee Auditoria Community Art Night



# TELUS family art and Jubilee Auditoria Society community art nights at Nina

Nina has been offering free or low cost weekly art classes for families and adults each year (September to June) since 2003, our first year of operation. After a decade of providing these classes with only a small grant from ECALA, it looked like these beloved classes would have to end.

Happily, our friends at TELUS and the Jubilee Auditoria Society came to the rescue. These classes have been going strong the past two years thanks to their generous support. We have even been able to add an end of year exhibition to celebrate the art, new friendships and the strengthened sense of community that these classes create.

Classes run from September to June in the Nina studios and are available, space permitting, on a drop in basis.



# exhibitions in the Stollery Gallery

The Stollery Gallery hosts a crazy number of exhibits and events each year! Most years, there are at least 18 different exhibitions. Some are tied to a festival (Kaleido, Deep Freeze, SkirtsAfire, the Works) or an annual event or program (City Centre schools annual show and sale or community and family art night celebrations) and have shorter runs.

Each year at least three exhibition spots are held to show new work created by Nina artists, and the gallery has hosted regular annual exhibits by groups such as Alberta Artists with Brain Injury Society and the Montana First Nation school at Maskwacis.

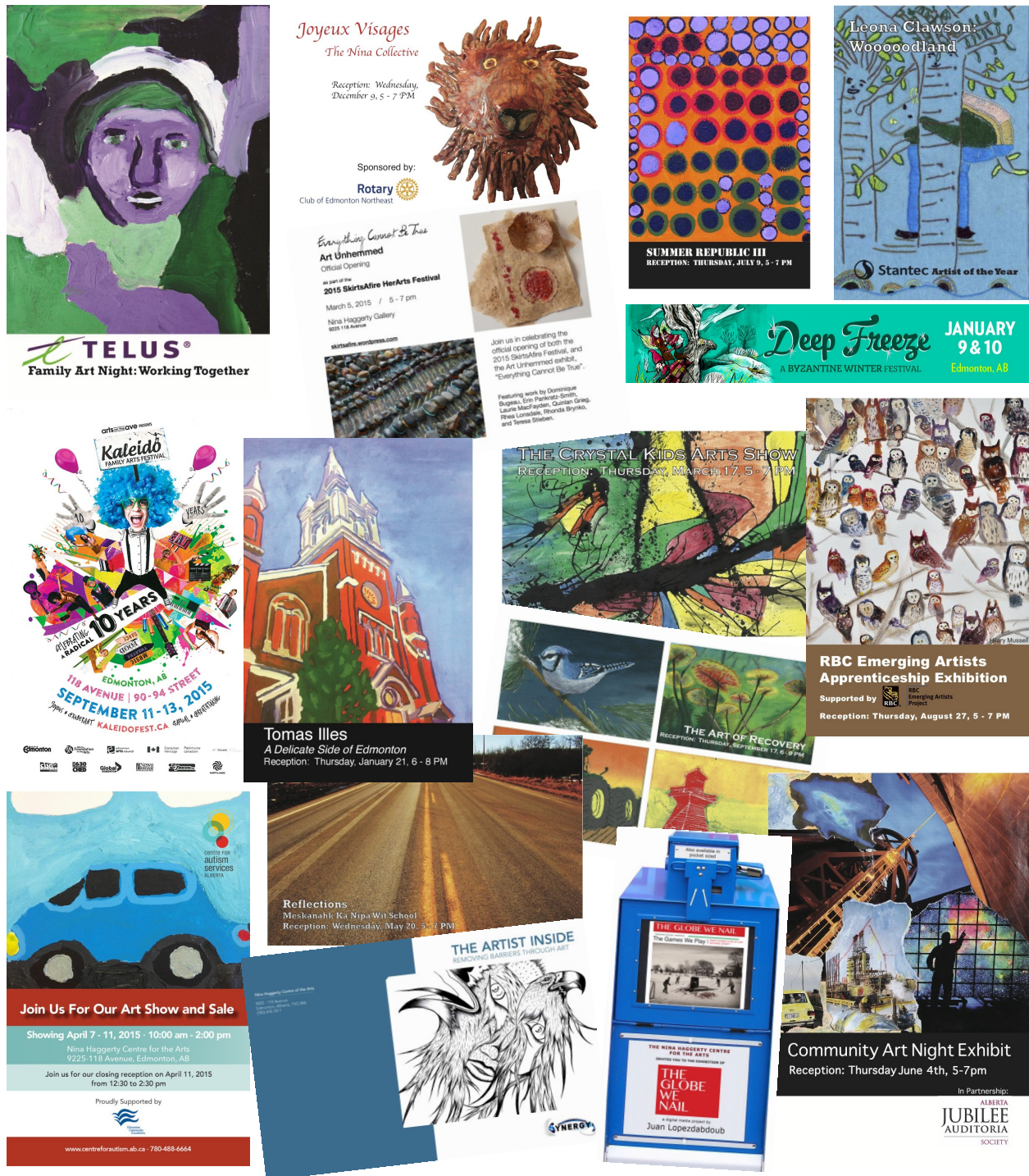
The Stollery Gallery is mandated to bring to public attention the work of artists who may be under-represented in the mainstream. This mandate includes outsider and untrained artists, artists who have never shown their work in a public gallery or artists who face some form of barrier such as disability, mental health issue or economic disadvantage. The gallery has also helped to introduce artists who are newcomers to Canada.

Exhibition sponsorship is critical to the success of the Stollery Gallery. We are immensely grateful to exhibit sponsors CN, Jubilee Auditoria Society, RBC, Rotary Club of Northeast Edmonton, Synergy Inmate Phone Solutions, TD and Urban Spirits Rotary.



(2015)CASA art show and sale; TELUS Family Art Night, *Working Together*; City Centre Education Program, *Art from the Heart*; Meskanahk Ka Nipa Wit school retrospective, *Reflections*, sponsored by TD; Jubilee community art night sponsored by Jubilee Auditoria Society; Juan Lopezdaboub, *The Globe We Nail*; new work from the Nina Collective, *Summer Republic*, sponsored by CN; RBC emerging artists apprentices exhibition, sponsored by RBC; *Kaleido Gallery*, Family Art Festival; Recovery Acres project, *The Art of Recovery*...

# April 2015 to March 2016



...(con't) inmates of Alberta correctional facilities, *The Artist Inside* sponsored by Synergy Inmate Phone Solutions; music salon with Sass Jordan & Derek Sharp; Nina's annual Christmas show and sale, *Joyeux Visage*, sponsored by the Rotary Club of Northeast Edmonton; (2016) Deep Freeze Gallery – a Byzantine Winter Festival; Tomas Illes, *A Delicate Side of Edmonton*; Leona Clawson, *Woooooodland* and Nina's 13<sup>th</sup> birthday bash; SkirtsFire HerArts festival, *Art Unhemmed*; Crystal Kids art show, sponsored by the Urban Spirits Rotary.

thank you to our 2015-16 exhibition sponsors, **CN, Synergy Inmate Phone Solutions** and the **Rotary Club of Edmonton Northeast**. Exhibition sponsorship ensures that the work of Nina artists receives public attention.

Nina artists were proud to exhibit their work at the Alberta Craft Council, Stony Plain Multicultural Centre gallery and in wonderful new exhibition space located at street level on the northeast corner of City Centre Mall in downtown Edmonton. This window display space, provided by the Oxford Properties Group, creates an intimate but highly visible gallery, particularly during summer festivals. Watch for bold new shows this summer sponsored by Stantec and Audi Edmonton North.



1



2



- 1 2 Shannon Dosser and Kim Hung Ho helped install their artwork in Nina's downtown exhibition space (NE corner of City Centre Mall directly across from Sir Winston Churchill Square and City Hall)
- 3 Alberta Craft Council exhibit January to March 2016



# ATB music project

Thanks to amazing support from ATB, Nina artists are busy writing songs, recording music beds and creating story boards for music videos. ATB's Sandra Huculak has taken a personal interest in the project, visiting the Nina studios for updates and facilitating a partnership with CKUA.

The project will produce six original songs written by artists in the Nina collective, along with four music videos. A number of artists have the chance to get involved, some writing lyrics, some performing, others playing or laying down music beds and starring in the music videos.

The first stages of the project are complete. Lyrics have been written, working with musician and producer Raphael Fréynet. Artists were supported to investigate topics that have meaning for them and what story they would like to tell. Then came the task of putting the lyrics to music, selecting the right chords and style and laying down sound beds. Some of the songs are sensitive, gentle and emotional, others are fun, upbeat and quirky. One, for example, is about pirates!

One song, written by Crystal, was inspired by Leona Clawson installation, Woooooodland and its central character, Charlie. Another songwriter, Collin, has recorded his voice in an electronic way to best capture his rap lyrics.

Auditions were then held to determine who would be performing the songs. Some songwriters will be performing their own music. Amber, who is blind, will be playing the piano for her own song while others will be performed by other aspiring vocalists. Angela Trudell, Brittany Leitheiser and Yvette Prefontaine worked with vocal coach Joëlle Prefontaine for voice training and to develop a feel for dramatic effect - how to bring a story to life. Angela and Yvette have already had the chance to record vocal tracks, working with Raphael and a technician in the professional studios at CKUA.

Once all the tracks are laid down, Raphael will be producing the final songs in his studio. Enter Yvonne DuBourdieu, who has started working with the songwriters to develop story boards for the music videos she will direct and produce.

ATB will be playing a big part in the November 2016 annual fundraiser, *Here's Nina*. ATB president and CEO, Dave Mowat, is this year's honorary chair for the event and an ATB emerging artist award for performance will be awarded to one artist from the project.

Watch for a launch reception late in 2016 or early in 2017. A link to the music videos will also be posted on the Nina website.

- 1 *Angela and Brittany rehearsing with vocal coach, Joëlle Prefontaine*
- 2 *Erin Lepine with Raphael Fréynet*
- 3 *Yvette Prefontaine at CKUA studios*
- 4 *Kelsey Hawkins with Raphael*
- 5 *Amber Strong playing piano with Raphael*

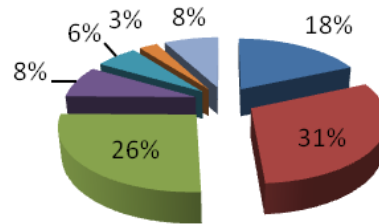
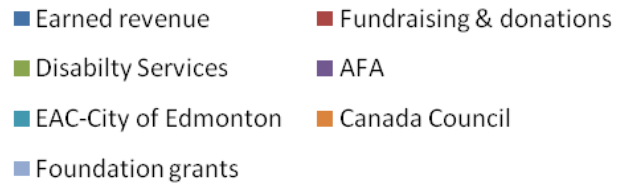
# ATB Financial®



## financial report



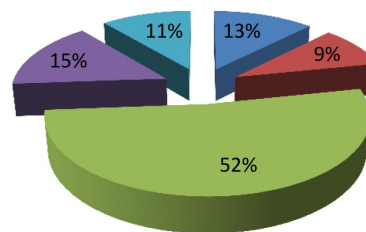
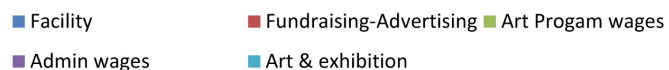
### Revenue by source 2015-16



It has been a challenging year financially for the Nina. Increased demand and significant growth in terms of expanded media, exhibition and art sales opportunities this year outpaced our capacity to generate operating funds. As a result, the year ended with a modest deficit (-\$28,723), and for the first time Nina's board and management were faced with the need to cut back on programming and hold the line in terms of any expansion.

In 2015-16, 49% of all operating funds were generated as earned revenue or through fundraising and donations, with operating expenses exceeding \$750,000. A significant trend impacting operations is the declining percentage of operating funds received from Alberta Disability Services. The contract remains static at approximately \$200,000 annually, paid monthly on invoice. While this source of funding at one time accounted for 45% of Nina's operating revenue, it now represents only 26% of revenue by source.

### Expenses by category 2015-16



Going forward, proceeds from a January 2016 casino, program cut backs and reduction in administrative staffing, allow us to project a balanced operating budget for 2016-17, with revenue and expenses held to approximately \$725,000. Dance, animation and glass media are impacted by the cutbacks, as well as administrative capacity to manage our volunteer program, on-line sales and merchandising. This is clearly not a long term solution, but it does give the organization some breathing room to address longer term sustainability.

## our sustaining partners

Arts funding from the Alberta Foundation for the Arts (AFA) and Edmonton Arts Council (EAC) accounted for 14% of Nina's operating revenue in 2015-16, with 26% provided by Alberta Human Services (Disability Services). We thank the EAC and AFA for providing modest increases in operating grant support.

With an additional 3% of operating revenue received through the Canada Council and 8% from foundations, these sources of funding combined represent 51% of all operating funds by source.

We could not do it without you!

This year, the Nina was very pleased to receive its first Canada Council Grant. This one-time grant provided administrative support to organizations that serve culturally diverse, Deaf and disability arts populations. We used these funds to strengthen financial management and bookkeeping systems, redevelop our website and support the expanded role of the artistic director position.



## CET accreditation

A survey team from Creating Excellence Together (CET) accreditation standards spent a few days on site at the Nina in May 2015, giving the studio program high marks for promoting quality of life, noting that artists entering the building "check their disability at the door."

Nina is unique in the Edmonton region so does not easily fit the established template, but working with our Disability Services contract specialist and the Alberta Council for Disability Services (ACDS), we were able to meet all required standards.

While unique to Edmonton, there is a similar program in the Calgary region, In-definite Arts Society (IDAS). Nina and IDAS staff have met several times to share ideas and best practices, each influencing the other in the pursuit of excellence. IDAS has met CET standards for a number of years but the contract process and its requirements has been a relatively recent change for the Nina.

We are pleased to have become accredited and to be accepted as an approved service provider under the new procurement process initiated by the province.



# 2016 patrons, 'saints' and artists

It began in 2013 with 13 patrons and our lovely patron saint, Lynn Mandel. This year, 42 artists have patrons and the program helps to sustain our busy studios. The patron program raises in excess of \$20,000, every penny going directly to programs.

We were fortunate to have former Patron Saints, Lynn Mandel and Dianne Kipnes on hand to pass the halo to this year's Saint, Suromitra Sanatani.

A highlight of the patron year is the annual luncheon where patrons and artists have the opportunity to meet and each patron receives a gift of artwork created especially for them by their artist.

This year's luncheon was the biggest ever and was hosted across the street from the Nina in the Alberta Avenue community hall. This location provided an opportunity for patrons to see the studios in action and made it easier for artists to attend the event.

Guests enjoyed a performance by Nina's dancers, supported by professional dancer, Amber Boratsik and musician, Karen Porkka. Nina has been able to offer a dance program for a number of years in partnership with Mile Zero Dance (MZD).

This year's performance was bitter-sweet as it may have been their swan song performance. For the first time, the Nina has had to make some tough decisions and will not be able to offer dance in 2016-17 unless a sponsor is found.

If you would like to find out more about the patron program or help save the dance program, please contact Wendy Hollo or Rona Fraser at the Nina.



## 2016 patrons

Don Agnew  
 Mark Agnew  
 Gahlib Ahmed  
 Bon Ton Bakery  
 Elaine Betchinski - Ellen Hughes  
 Lena BouFakhreddine  
 Marianne Brown  
 Trudy Callaghan  
 Orville Chubb  
 Raylene Czuy  
 Jerry Debko - Ailien Holdis  
 Michelle Dinner  
 Hilton Dinner  
 Iannick and Deanne Fallu  
 Jodi Glen  
 Jackie Rae Greening  
 Karen Heyman - Mike Mizuik  
 Wendy Hollo - Janet Pavlic  
 Janice Kosak  
 Jonathan Kosak  
 MacKenzie Kosak  
 Mellissa Kraft  
 Lindsay MacPhie  
 Lynn Mandel  
 Stephen Mandel  
 James Morrissey  
 Tina Naqvi-Rota  
 Kimberly Nishikaze  
 Walter Pavlic  
 Mary Persson  
 Rose and Maurice Prefontaine  
 Oliver Rossier  
 Brittany Runzer  
 Colleen Sauer  
 Anne and Keith Shillington  
 Barbara Steckly  
 Vanessa Swarbrick  
 Adrienne Vanderheyden - Eric Lang  
 Derek Wicks  
 Cecilia Wong - Jeffery Lu  
 Debra Wooding  
 Noel Xavier



## 2016 artists

Peter An  
 Cheryl Anhel  
 Dale Badger  
 John Barayuga  
 Scott Berry  
 Dominique Bugeaud  
 David Canough  
 Stephanie Chapman  
 Corwin Cherwonka  
 Leona Clawson  
 David Dang  
 Robert Futoranski  
 Aba Garbrah  
 Damanjit Grewal  
 Aaron Harvey  
 Kim Hung Ho  
 Colleen Honish  
 James Horucki  
 Jaymee Howarth  
 Jamie Laventure  
 Joo Ee Law

Erin Lepine  
 Michael Letwin  
 Trevor Letwin  
 Neil Martin  
 Mariola Mielcarz  
 Dean Olesky  
 Lora Pallister  
 Marla Petecki  
 John Polianec  
 Yvette Prefontaine  
 Ulrike Rossier  
 Vanessa Ryl  
 Holly Sabourin  
 Randy Stennes  
 Desiree Stewart  
 Jonathan Storagh  
 Mark Traficante  
 Angela Trudell  
 Linda Vincent  
 Grace Willard  
 John Wilson

1 Patron Ghalib Ahmed and artist Randy Stennes

2 Artist Aaron Harvey with his patron, Iannick Fallu

3 Artist Linda Vincent with her patron, Derek Wicks

4 Our patron saints, from left to right, Dianne Kipnes (2014), Suromitra Sanatani (2016) and Lynn Mandel (2013). Missing from photo, Beth Allard Clough (2015)

# What's happening at the Nina...

If it's happening on Alberta Avenue (118th Avenue), chances are it's happening at the Nina. Located in the heart of the arts revitalization area, the Nina is proud to provide space to community groups, local festivals and individual artists for everything from Tai Chi to plays, book launches, poetry slams, workshops and meetings.

The Nina is fortunate to have its 7,500 square foot facility and "plays it forward" each year, often providing its space at very low or no cost to like-minded groups.

The Nina is especially proud to play a part in supporting new festivals like Skirts a Fire and Yule Ave a Merry Christmas, and to host events such as plays and exhibits that play host to local school groups and neighbourhood families.

With its bank of windows facing the street, the Nina is a visible and vibrant space, doing its part to contribute to a strong community. Nina is aided in this pursuit by supporters like TELUS, the Jubilee Auditoria Society and Urban Spirits Rotary that allow the Nina to offer free art programs for adults, children and families.

Plays, book launches, art nights, rehearsals, Rotary meetings, Tai Chi, ukulele orchestra, poetry, art classes, birthday parties and community events...

...Oh yes, and lots of art openings, exhibitions, art fairs, live music and workshops.





- 1 Serca Irish festival and (inset) lantern making and musical performance
- 2 Alberta Education made art inspired by the work of Ulrike Rossier as part of a team building exercise
- 3 Sass Jordan and Derek Sharp performed an intimate concert in the Stollery Gallery in October 2015
- 4 5 Art nights at the Nina
- 6 Artwork by Ulrike Rossier



# Here's Nina - dinner theatre to red carpet awards celebration

## 2015 event & media sponsors

Nina's annual fundraiser has always embraced an element of surprise, whether in its fluid format or wondering what Sheri Somerville will say next.

In 2015, we held our second of two evenings with award winning playwright and producer, Stewart Lemoine, this time offering guests a dinner theatre experience. We also introduced the Nina's, Edmonton's newest art awards. [See page 9]

Based on the great response to the awards portion of the evening, we are excited to launch our 2016 *Here's Nina* event as a red carpet awards gala. The evening will feature a great line-up of well-known local entertainers, including performances by Tommy Banks, PJ Perry and rising country star, Colleen Rae.

There are some things we just don't want to change... we are excited to welcome back the dynamic team of Sheri Somerville and CTV's Josh Classen as MCs for the evening. Our rock solid title sponsor, World Stone and event sponsor Lexus of Edmonton are also back to host another fabulous evening at the Italian Cultural Centre.

Save the date, November 2, 2016, and take advantage of great early bird pricing until August 31 [Tix-on-the-Square].

This night, while all about fun, is also the most important night of the year for the Nina. We raise half of our operating budget through earned revenue, fundraising and donations and we rely on this event to account for a significant portion of that goal.

We are very pleased to welcome to the 2016 event our new honorary chair, ATB president and CEO Dave Mowat. Joining him are new sponsors for the event, Synergy Inmate Phone Solutions, ATB and Alberta Remy-Cointreau-Glazers, and returning as award sponsors, TELUS, ATB, Stantec and Cameron Corporation.



CITY | LIFE | STYLE | EDMONTON

avenue

odvodmedia

(L to R) Sheri Somerville, Josh Classen, Shelagh Kubish, Stantec guests and silent art auction



# Festivals

The Nina is proud to be part of the Alberta Avenue arts revitalization movement and is delighted to be a venue for a number of local festivals. It's a great way for the neighbourhood to put its best foot forward and to let all Edmontonians know that 118th avenue is a cool place to visit, explore and live.

In our seven years on the Ave we have seen festivals like Kaleido and Deep Freeze explode, attracting thousands of people, rain, shine or snow, to our community. We have also helped new festivals emerge by providing our space to SkirtsAfire and Yule Ave a Merry Christmas.

There is always a lot happening on the Ave - music at the local Carrot Community Arts Coffeehouse, old fashioned pop-up drive in theatres, craft fairs and more. There are also a number of great local and ethnic eateries.

Whatever brings you to the Ave, be sure to visit the Nina. Check out our Stollery Gallery or if you are visiting during the week between 10 and 2, be sure to drop in to see our busy studios in action. Visitors are always welcome.



1 Nina artist, Stacy Moon, with Premier Rachel Notley, honorary "Skirt" at this year's SkirtsAfire festival



2 3 4 Kaleido Family Arts Festival - outside on the street, in the gallery and in the studios



The Nina is proud to be an active venue for new and not so new festivals every year, including Kaleido Family Arts Festival, Deep Freeze Byzantine Winter Festival, SkirtsAfire HerArts Festival, Serca Festival, Yule Ave a Merry Christmas and more...



check out  
our new look

thenina.ca

Websites are hard! The Nina site has always been a challenge for us. How do we portray our artists? Do we talk about disability or do we just focus on the art and let their stories emerge on their own?

We have tried both approaches, not to mention a few different content management systems, and believe we have struck the right balance with the latest site. Yes, we say right up front that we are a collective of artists who have developmental disabilities. But when you meet the artists, you first see their art. Find a piece you like, and you can find out more about the artist.

Launched in June 2016, the site was designed by the amazing team at Kobot Industries. Bryan Birtles, Bryan Kulba and Stefan Duret know their stuff and made the whole scary process not only manageable but even kind of fun!

New to the site is a weekly blog post where you can get a more in-depth look at an artist, friend of Nina, programming or news from our partners. If you would like to "guest blog" please get in touch with Wendy Hollo (wendy@thenina.ca).

We also encourage you to follow us on Facebook, Twitter or Instagram and like, share or comment on our posts so we can engage a wider audience.

One of the features of the redeveloped site is that it adapts to your phone, tablet or laptop. We'd love your feedback. We are still populating some of the pages with archival material and are more than open to suggestions to improve the site.



meet a new  
artist by  
checking out  
their on-line  
profile



By following us on  
facebook, twitter or  
instagram you help  
promote these  
emerging artists



*Sometimes I go home and look at the  
pictures on my shelf and think, "Oh my  
gosh! I did that!"*

*Artist David Canough*



visit Nina's  
on-line store to  
find cool art ...  
and change lives

# consider a legacy gift and name our studios

The Nina is proud to have the Stollery name on its permanent home. Bob Stollery was an early visitor to the original Nina studios and he saw two things. First and foremost, he 'got' what we were trying to do and he loved it. Second, he could see that the dream was not funded and would not last without quick and credible support. The Stollery Foundation 3-year start up grant, matched by the Edmonton Community Foundation, created the cornerstone upon which we have been able to establish a sustainable operation.

Now, a few years into our second decade, we would love to add one more name to our building. The Nina is looking for a community partner interested in making a significant contribution. In exchange, we offer a legacy project:

**Your name would join the Stollery name, in perpetuity on our building.**

From inception, the Nina has boldly embraced every opportunity and, as a result, has experienced tremendous growth. An ever-expanding number of artists work in the studios, exploring a growing range of art options.

This year, however, have struggled to sustain our current level of operations. With core grant and operating funds now paying for only 51% of operating costs, our capacity to generate funds through sales, fees, fundraising efforts and donations has been stretched to the limit.

For the first time, we are going to have to curtail our activities, cutting back on glass making and animation and putting our 6-year dance program on hold. Our energies will be focused this year on exploring, with help from the Social Enterprise Fund, opportunities to expand our fund development capacity.

The sponsorship value for naming the studios is \$250,000. Recognizing the uncertain economy and our need for predictable operating funds, we propose that this amount be paid in annual installments over the next 5 to 10 years.

Anyone interested in more information or who has thoughts or ideas on this topic are encouraged to contact Wendy Hollo or Rona Fraser.



your chance to win a trip for two to Hawaii is also a big win for the artists at the Nina



Picture yourself and your plus one at the Edmonton or Calgary airport ready to board your free flight to Honolulu where you will stay at the luxurious five-star ....for six nights and seven glorious days. While you are at it, keep in mind that you are leaving behind the snow and cold to relax in paradise.

This amazing trip has been donated to the Nina by our good friends at Synergy Inmate Phone Solutions, so while you are basking in the sun, you are also helping to stock the shelves in Nina's bustling studios.

Tickets are only \$25 and the odds are in your favour with only 1,000 tickets printed. The draw will be made at this year's Here's Nina fundraiser on November 2 at the Italian Cultural Centre. You do not have to be present to win, but wouldn't it be fun if you were?!

### Here's what you can win!

**Grand Prize:** 7 days and 6 nights at the internationally acclaimed 5-Star Halekulani Honolulu Oceanfront Property with return airfare for two from Calgary or Edmonton. Valued at \$5,200

**2nd Prize:** A private art party for up to 15 people at the Nina. Includes a spectacular art project for everyone to take home, fine food and refreshments. Valued at \$600

**3rd Prize:** A \$500 Nina gift certificate that can be redeemed on-line or in person.

**4th Prize:** A romantic pottery evening for two at the Nina. Use the pottery wheel to create 3 special clay projects together. Includes food and refreshments. Must be 18 to win.

Help to keep the busy studios at the Nina stocked with quality art materials for the more than 170 artists who work on site each week.

Pencils - \$5, the joy of making your own art - priceless.





Wendy Hollo was honoured to be Global TV's Woman of Vision in May 2015, recognized for her role in taking the Nina from vision to reality. While not one to enjoy the spotlight, she was excited to have the opportunity to raise the profile of the Nina and of the opportunity to introduce the Nina to a broader audience. While definitely a driving force behind the scenes and passionate in her pursuit of funds and supporters, she credits the success of the Nina to good timing and a dynamic team. Paul Freeman, Rona Fraser and a fearless advisory team all worked together to ensure the Nina's success. "Sometimes when you try to do something, you run into walls, but that didn't happen with the Nina. It was clearly something that was meant to be. We had lofty goals and we exceeded every one of them." It took a leap of faith in the beginning however. The doors opened in January 2003 with no operating funding in place. "We all really believed in what we were doing and were confident that once people could come down and experience the studio, meet the artists and see the art, they would fall in love with it." Looking back, Wendy admits that it was a bold move and not without considerable risk, but she is proud of the way everyone came together to make it work. "it's an Edmonton success story. Edmonton is the kind of place that gets behind 'bidgideas' and makes them happen."



Paul Freeman received a very funky little trophy and the Mile Zero Dance Progressive Artist award at the 2015 Mayor's Celebration of the Arts. This award was established to mark the company's 30th anniversary and will be awarded each year to a community-engaged, Edmonton-based artist that best exemplifies these ideals. Paul, as the inaugural recipient of this award was a worthy candidate and sets the bar high. As a Nina founder, he established the studio program in 2003 and now, as Artistic Director, leads a team of professional artists that support 170 artists each week. A tireless advocate for Nina's collective of artists, Paul has promoted their work across Alberta, nationally and internationally and has helped to bring many artists and their work to public attention. Taking a few months off this year to work on his own art, Paul is crating large sculptural works with grant support from the Alberta Foundation for the Arts. Paul who has a Masters degree in Fine Art, has won numerous awards and grants for his artwork.



Nina Haggerty died before our doors opened, but she exemplified why the Nina is so important. Much of her story is not a happy one. As a child, she and her sister contracted polio, and were victims of abuse at the hands of an alcoholic step-father. Their mother admitted the girls to an institution where she believed they would be safe.

After more than 50 years in the institution, Nina and her sister were moved to Edmonton. Nina was placed in an extended care facility where she took her first art class. She had found her passion! For the rest of her life, she created many paintings, gifting most to friends and care givers.

The rest of her story is much happier. She and her sister, Rita, were finally able to move to home in the community where they lived together, just as they had as children. They enjoyed Christmases and holidays, and Nina continued to paint for the rest of her life. She died at the age of 80, six months after Rita's death.

One can only imagine the rich contribution Nina would have made has she been able to nurture her talent as an artist from a younger age.



## Nina by the numbers

170 artists work in the Nina studios every week

18 exhibits and events in the Stollery Gallery

58 volunteers contributed 1,959 hours of their time

50% of proceeds from all art sales go to the artist - the other half is used to buy art supplies

\$345,000 donation and fundraising goal for 2016/17 to sustain operations



